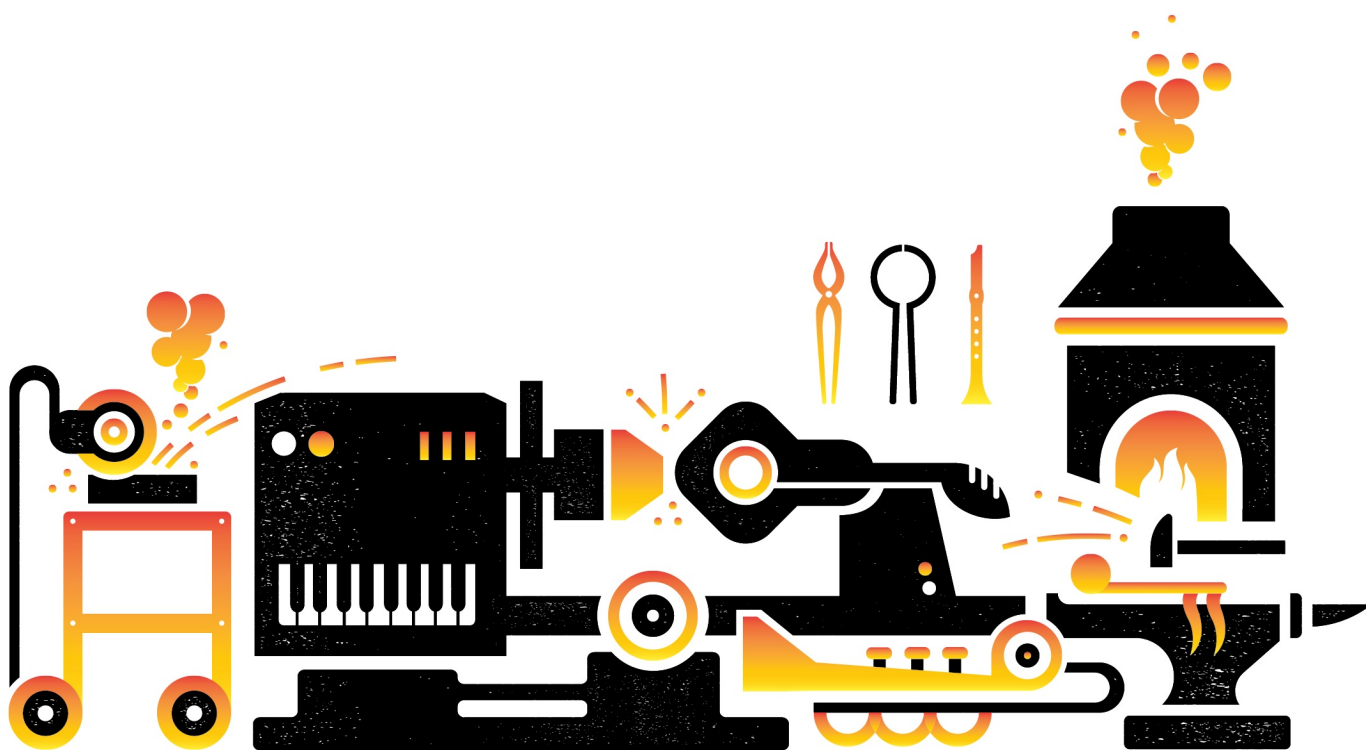




KYLE VANDERBURG

THAW

Clarinet Choir





KYLE VANDERBURG

THAW

Clarinet Choir



Program Note

I wrote Thaw during my third winter in Fargo, and it was an act of optimism, because spring hadn't hinted its arrival when I completed the piece. My intent was to provide a meditation on the nature of melting snow and the slow, steady revealing of things last seen in November. I thought of the piece as figurative as well, hinting at the defrosting of our preconceptions, our assumptions, and our expectations. In hindsight, it seems appropriate that this piece was written in 2020, a year in which has seen a thaw in a number of ways.



Duration: 4'

This work was engraved by NoteForge in Fargo. The music is set in Norfolk, provided by NYC Music Services. The text is set in Vollkorn, designed by Friedrich Althausen. The title font is Sonder Sans by Andrew Herndon.

The cover was designed by Jamie Trosen Design + Creative. If you purchased a physical copy direct from us, it's likely you're holding Whip Cream Hemptone made by French Paper.

If we care this much about how it looks, imagine how much we care about how it sounds.

noteforge.com

TO PURCHASE THIS SCORE FOR PERFORMANCE, VISIT NOTEFORGE.COM

THAW

Transposed Score

Kyle Vanderburg
(2020)

♩ = 66

Clarinet in B♭ 1

Clarinet in B♭ 2

Clarinet in B♭ 3

Clarinet in B♭ 4

Bass Clarinet in B♭ 1

Bass Clarinet in B♭ 2

mf

mp cantabile

7

9

Cl. 1

Cl. 2

Cl. 3

Cl. 4

B. Cl. 1

B. Cl. 2

mp

< mf > mp

mf > mp

f > mf

mf

f > mf

mf

13

Cl. 1 *p* *mf* *p* *mf* *p* *mf* *mp* *< mf = mp*

Cl. 2 *p* *mf* *p* *mf* *p* *mf* *mp* *< mf = mp*

Cl. 3 *< mf mp* *< mf mp* *mf > p* *mp* *< mf = mp*

Cl. 4 *< mf mp* *< mf mp* *mf > p* *mp* *mf = mp*

B. Cl. 1 *f* *mf*

B. Cl. 2 *f* *mf*

19

Cl. 1 *< mf = mp* *mf* *mp* *< mf mp* *mf* *> mp*

Cl. 2 *mf = mp* *mf* *mp* *< mf mp* *mp* *> mp*

Cl. 3 *< mf = mp* *mf* *mp* *< mf mp* *mp* *> mp*

Cl. 4 *mf > mp* *< mf mp* *< mf mp* *< mf* *> mp* *f*

B. Cl. 1 *f* *mf*

B. Cl. 2 *f* *mf*

accel.

Cl. 1 *cresc.*

Cl. 2 *cresc.*

Cl. 3 *cresc.*

Cl. 4 *> mf cresc.*

B. Cl. 1 *cresc.*

B. Cl. 2 *cresc.*

f

ff

ff

31 $\text{♩} = 88$

poco rit.

Tempo I

Cl. 1 *f* *mf* *f*

Cl. 2 *f* *f* *> mf* *f*

Cl. 3 *mf* *f* *> mf* *f* *mf*

Cl. 4 *mf* *f* *mf*

B. Cl. 1 *ff* *> f*

B. Cl. 2 *ff* *> f*

poco rit.

Tempo I

37

Cl. 1

Cl. 2

Cl. 3

Cl. 4

B. Cl. 1

B. Cl. 2

42

Cl. 1

Cl. 2

Cl. 3

Cl. 4

B. Cl. 1

B. Cl. 2

47 48

Cl. 1 *f* *ff* *mp* *f* *mf*

Cl. 2 *ff* *f* *ff* *ff* *mp* *f*

Cl. 3 *mf* *ff* *mf* *ff* *mp* *f* *mf*

Cl. 4 *ff* *f* *mf* *f* *ff* *mp* *f*

B. Cl. 1 *ff* *ff* *mf* *ff* *f*

B. Cl. 2 *ff* *ff* *mf* *ff*

54

52

Cl. 1 *f* *ff* *ff*

Cl. 2 *f* *ff* *f* *ff*

Cl. 3 *f* *ff* *ff* *f*

Cl. 4 *mf* *f* *ff* *f*

B. Cl. 1 *ff* *f* *ff* *f*

B. Cl. 2 *f* *ff* *f*

56

Cl. 1 *fff* *f* *ff* *f*

Cl. 2 *fff* *f* *ff* *f* *f*

Cl. 3 *fff* *f* *ff* *f*

Cl. 4 *fff* *f* *ff* *f*

B. Cl. 1 *fff* *f* *ff*

B. Cl. 2 *fff* *f* *ff*

61

Cl. 1 *ff* *f* *mf* rit. $\text{♩} = 47$

Cl. 2 *ff* *f* *mf*

Cl. 3 *ff* *f* *mf*

Cl. 4 *ff* *f* *mf*

B. Cl. 1 *ff* *f* *mf*

B. Cl. 2 *ff* *f* *mf*