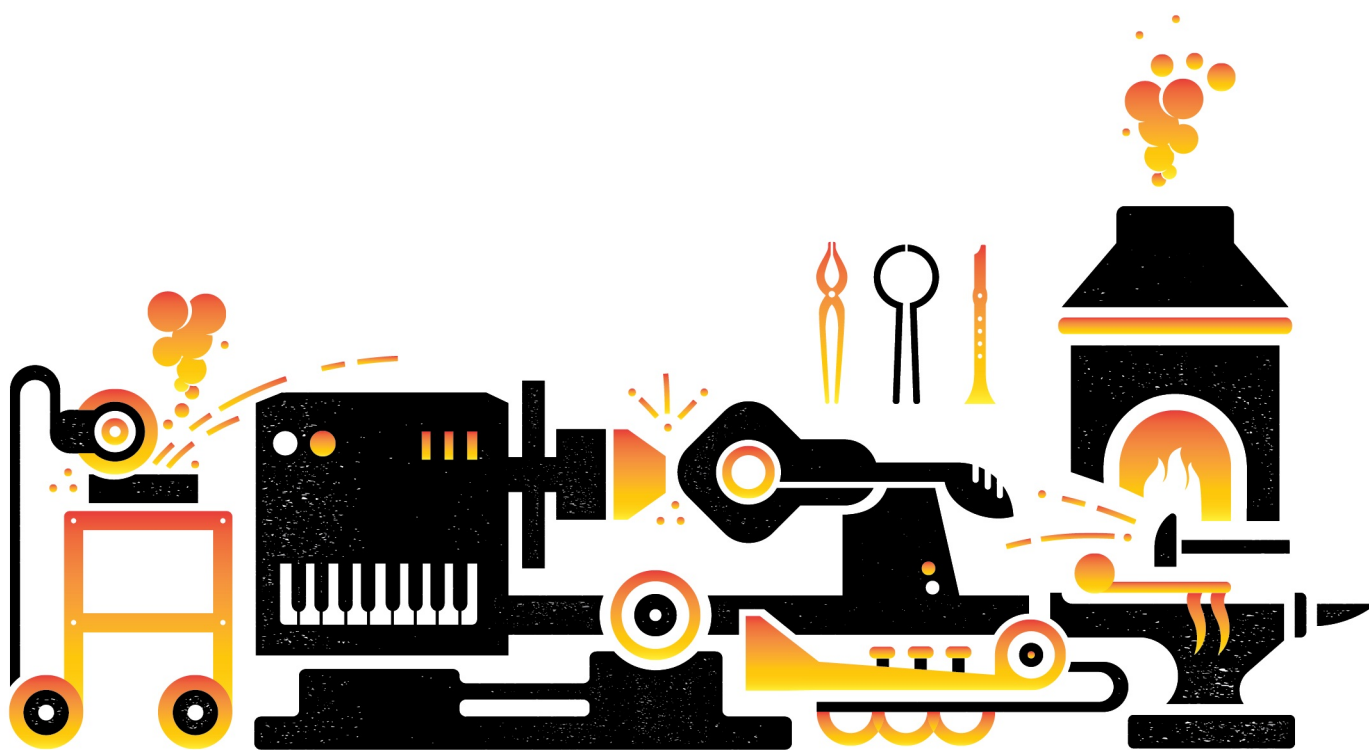




KYLE VANDERBURG

OVER EVERY OPEN FIELD

Flute, Clarinet, and Piano





TO PURCHASE THIS SCORE FOR PERFORMANCE, VISIT NOTEFORGE.COM

KYLE VANDERBURG

OVER EVERY OPEN FIELD

Flute, Clarinet, and Piano



Commissioned by the Fred Jones, Jr. Museum of Art at the University of Oklahoma

Premiered March 10, 2013 in the Sandy Bell Gallery of the Fred Jones Jr. Museum of Art.

Angel Bradford, flute, Cassie Keogh, clarinet, Elizabeth Serine, Piano.

Over Every Open Field was inspired by Ed Ruscha's painting *No Man's Land*, which pairs an outline of the state of Oklahoma with a distended question mark. This leaves the work ambiguous and open to interpretation; I attempted to capture this uncertainty by writing a melody that was questioningly optimistic. This pastoral melody journeys through various treatments before returning to an image of the original iteration, ending with a cryptic unresolved chord.



Duration: 5'

This work was engraved by NoteForge in Fargo. The music is set in Norfolk, provided by NYC Music Services. The text is set in Vollkorn, designed by Friedrich Althausen. The title font is Sonder Sans by Andrew Herndon.

The cover was designed by Jamie Trosen Design + Creative. If you purchased a physical copy direct from us, it's likely you're holding Whip Cream Hemptone made by French Paper.

If we care this much about how it looks, imagine how much we care about how it sounds.

noteforge.com

TO PURCHASE THIS SCORE FOR PERFORMANCE, VISIT NOTEFORGE.COM

Commissioned by the Fred Jones Jr. Museum of Art.

OVER EVERY OPEN FIELD

Kyle Vanderburg
(2013)

Questioningly Optimistic (♩ = 96)

Flute

Clarinet in Bb

Piano

mf

mf

mp

Fl.

Cl.

Pno.

10

17

mp

mp

mf

mp

mf

Red. * Red. * Red. * Red. ad lib.

Fl.

Cl.

Pno.

19

mp

mf

mp

mf

Copyright © MMXIII Kyle Vanderburg, NoteForge (ASCAP)
All Rights Reserved. International Copyright Secured. kylevanderburg.com

TO PURCHASE THIS SCORE FOR PERFORMANCE, VISIT NOTEFORGE.COM

26

Fl.

Cl.

Pno.

mp *mf* *mp* *f*

32

Fl.

Cl.

Pno.

p *mf*

38

Fl.

Cl.

Pno.

mp *p*

44

Fl. *mf*

Cl.

Pno.

Red. * *Red.* * *Red.* * *Red.* * *Red.* *

49

Fl. **51** Tenacious ($\text{♩} = 120$)

Cl. *f*

Pno. *f*

Red. * *senza Red.*

54

Fl.

Cl. *f*

Pno.

Musical score for Flute (Fl.), Clarinet (Cl.), and Piano (Pno.). The score is divided into four systems, each containing three staves. The key signature is one sharp (F#) and the time signature is 4/4. Measure numbers 59, 65, 71, and 77 are indicated at the start of their respective systems. A large watermark 'PERUSAL SCORE' is overlaid diagonally across the page. Performance markings include *mp*, *f*, *mf*, *ff*, and *mp*. The score includes various musical notations such as slurs, ties, and dynamic markings.

84

Fl.

Cl.

Pno.

mp

90

95

Fl.

Cl.

Pno.

f

f

mp

97

Fl.

Cl.

Pno.

mp

mf cresc.

mf cresc.

mf cresc.

accel.

103

Fl.

Cl.

Pno.

rit.

Resolute... (♩ = 88)

109

Fl.

Cl.

Pno.

fff

fff

fff

Red. *

115

Fl.

Cl.

Pno.

f

f

Red. *

Red. *

Red. *

Red. *

Red. *

Red. *

Red. *

rit. ...or not.

123

Fl.

Cl.

Pno.

Red. *

Red. *

Red. *

Red. *

Red. *

Red. *

Red. *

Red. *